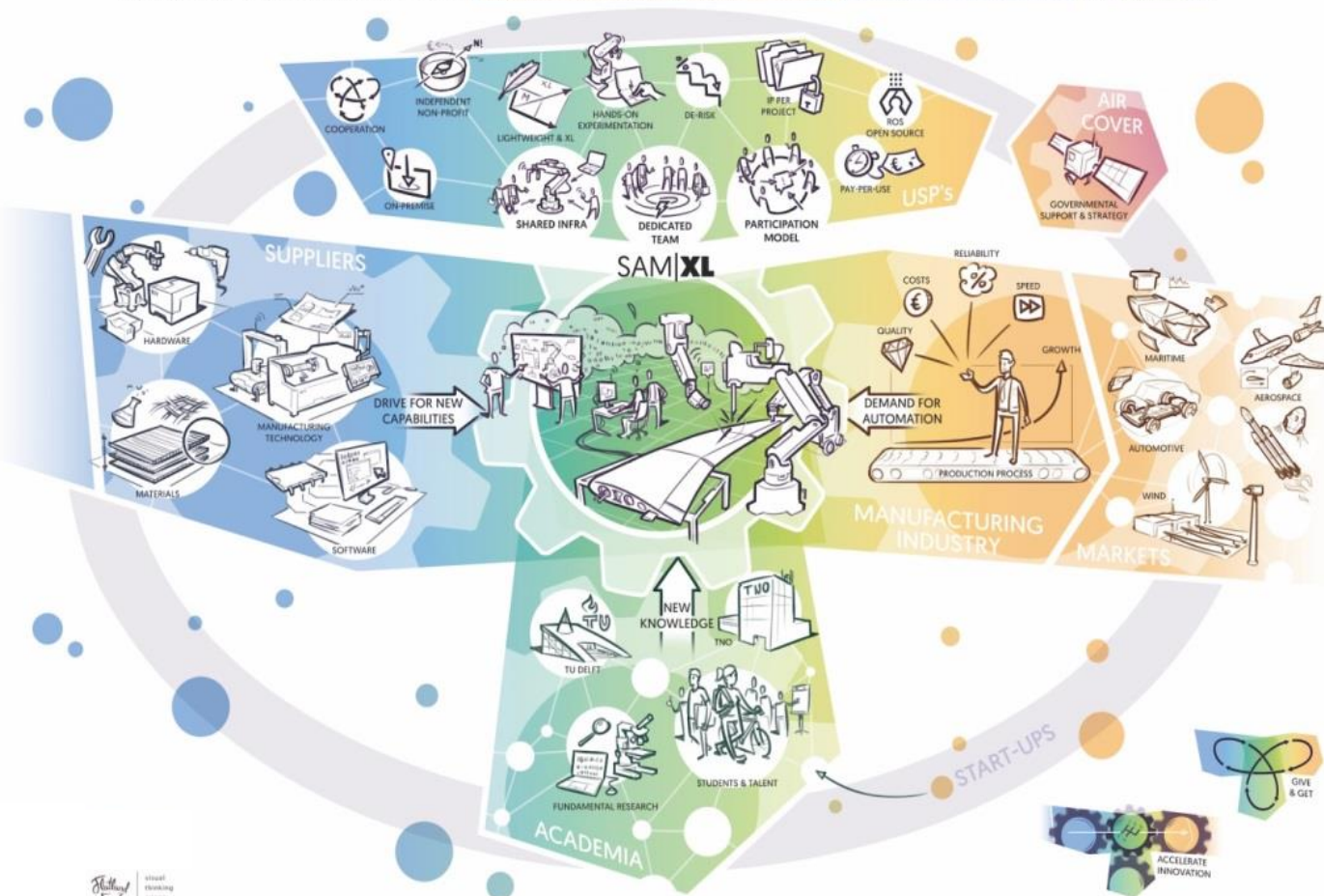


THE INNOVATION ACCELERATOR FOR THE **ADVANCED MANUFACTURING INDUSTRY**, **TECHNOLOGY SUPPLIERS** AND **RESEARCH**.



SAM|XL

Smart Advanced Manufacturing



Rotterdamseweg 382c
2629 HG DELFT
The Netherlands
www.samxl.com
info@samxl.com

- **World Class Knowledge Base.**
- **Collaboration along Cross-Sectoral Composite Supply Chains: Research, Demonstration, De-risking and Implementation.**
- **Future Factory Workforce Training and Student Education.**
- **2000 m² Industrial Scale Facilities: Access and Expansion.**
- **Onsite Offices for Industry Partners.**



About SAM|XL

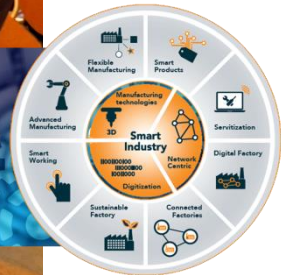
SAM|XL (Smart Advanced Manufacturing XL) is a collaborative research centre where technology is being developed, demonstrated, and de-risked for automated manufacture of large-size lightweight composite parts for aircraft, wind turbine blades, spacecraft and maritime applications. The collaborative research centre is setup as a non-profit foundation under the auspices of the TU Delft.

Automation

SAM|XL is establishing and expanding industrial-scale automation equipment that is accessible to its partners for research, demonstration and de-risking of technology prior to upscaling. In addition, through relevant projects the centre generates opportunities to students from the nearby universities and universities of applied sciences to kick start their career in smart manufacturing and become the workforce that carries our Future Factories.

Innovation accelerator at TU Delft Campus

SAM|XL is located at the TU Delft Campus. It brings together the knowledge base of TU Delft Aerospace Engineering, TU Delft Robotics Institute, TNO Industry, the Industry Partners that span the cross-sectoral composite supply chains and Automation Suppliers to accelerate automation processes.



Airbus Defence & Space
Nederland

